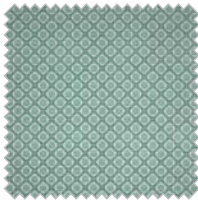
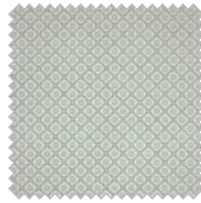


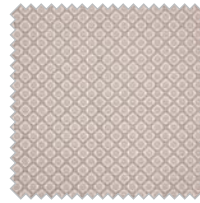
Nolan Acacia
NAC



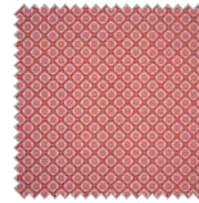
Nolan Aloe
NAL



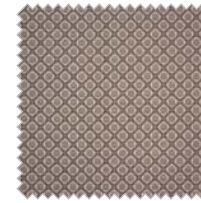
Nolan Arctic
NAR



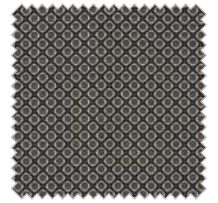
Nolan Chai
NCH



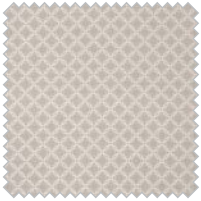
Nolan Coral
NCO



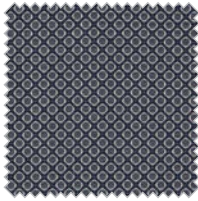
Nolan Flint
NFL



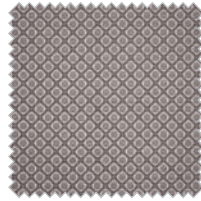
Nolan Licorice
NLI



Nolan Oatmeal
NOA



Nolan Pacific
NPA

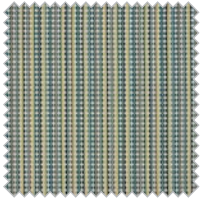


Nolan Steel
NST

NOLAN, OLLEY & PRESTON

Warwick Nolan , Olley & Preston

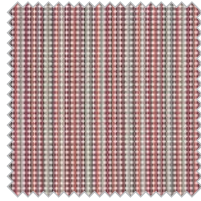
- Durability: Heavy Commercial 20,000 - 40,000 Rubs Martindale
- Vacuum regularly using low suction
- Rotate reversible cushions regularly
- Protect from direct sunlight
- Professional cleaning is recommended, may be spot cleaned with dry cleaning solvent
- Nolan - 62% Polyester, 38% Acrylic
- Olley - 70% Polyester, 30% Acrylic
- Preston - 60% Polyester, 40% Acrylic



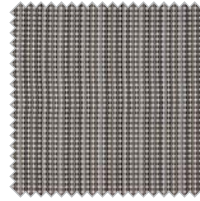
Olley Acacia
OAC



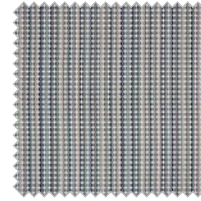
Olley Chai
OCH



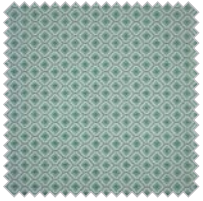
Olley Coral
OCO



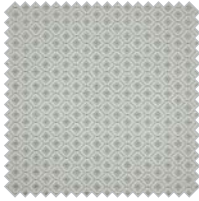
Olley Licorice
OLI



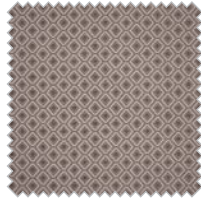
Olley Pacific
OPA



Preston Aloe
PAL



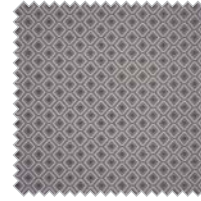
Preston Arctic
PAR



Preston Flint
PFL

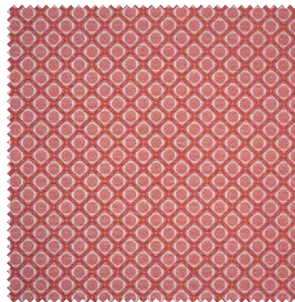


Preston Oatmeal
POA

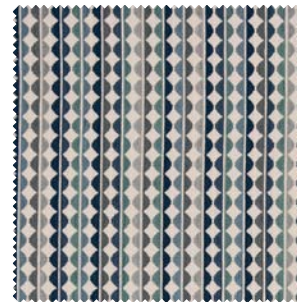


Preston Steel
PST

Warwick Nolan



Warwick Olley



Warwick Preston

